



## NEWINGTON LONDON

2 Bedrooms

Apartment

Located in London

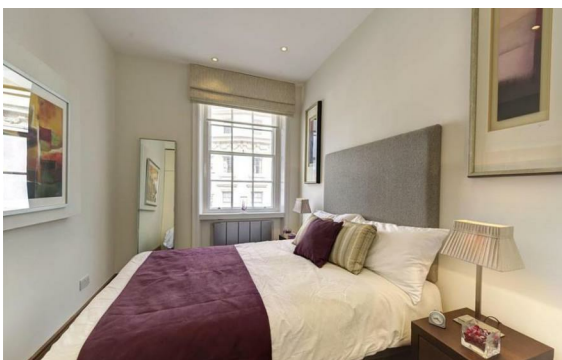
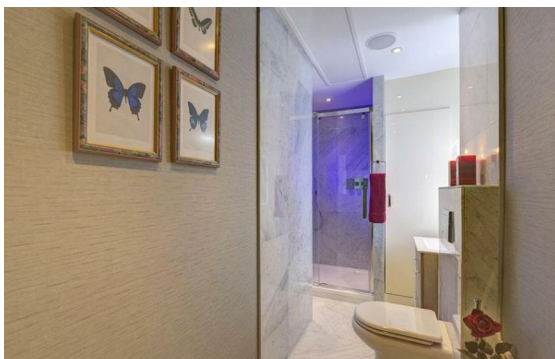
£1,340 Per Month



[info@newingtonstates.com](mailto:info@newingtonstates.com)

<http://www.newingtonstates.com>

020 7724 2233



A stunning, newly renovated two-bedroom apartment situated in a highly desirable portered building directly opposite Hyde Park. Finished to an exceptional standard, the property comprises a bright and spacious reception room, a contemporary fully fitted kitchen, two generously sized double bedrooms, and two stylish bathrooms (including one en-suite).

Residents enjoy the benefit of 24-hour portage, lift access, and an unbeatable location just moments from the open green spaces of Hyde Park, as well as the world-class shopping, dining, and transport links of Mayfair and Knightsbridge.

EPC rating: D

## Energy Efficiency Rating: D

Agents Note: Whilst every care has been taken to prepare these particulars, they are for guidance purposes only. All measurements are approximate and are for general guidance purposes only and whilst every care has been taken to ensure their accuracy, they should not be relied upon and potential buyers/tenants are advised to recheck the measurements.

# NEWINGTON LONDON

60 Upper Montagu Street

London

W1H 1SN

020 7724 2233

[info@newingtonstates.com](mailto:info@newingtonstates.com)

<http://www.newingtonstates.com>